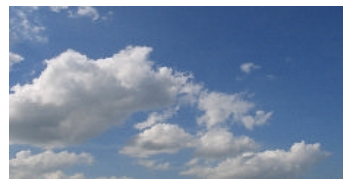

SBB's Engagement for Sustainable Mobility.



The new strategy on ecological sustainability 2010 – 2015.

Rémy Chrétien
Head, Rail Environment Center
Swiss Federal Railways SBB

Looking back: SBB's track record over the last decade.

Development since 2000



Climate protection: **G: 13 g CO₂/tkm** (lorry 40 tons: 107 g/tkm) 
P: 7.9 g CO₂/Pkm (car fleet average: 189 g/Pkm) 



Energy efficiency: **G: 0.070 kWh/tkm** (0.7 L diesel/100 tkm) 
P: 0.088 kWh/Pkm (1 L gasoline/100 Pkm) 



Noise reduction: **89'000 people protected from railway noise** 
 97% of passenger fleet with low-noise brakes, 77% G
 193 km noise barriers

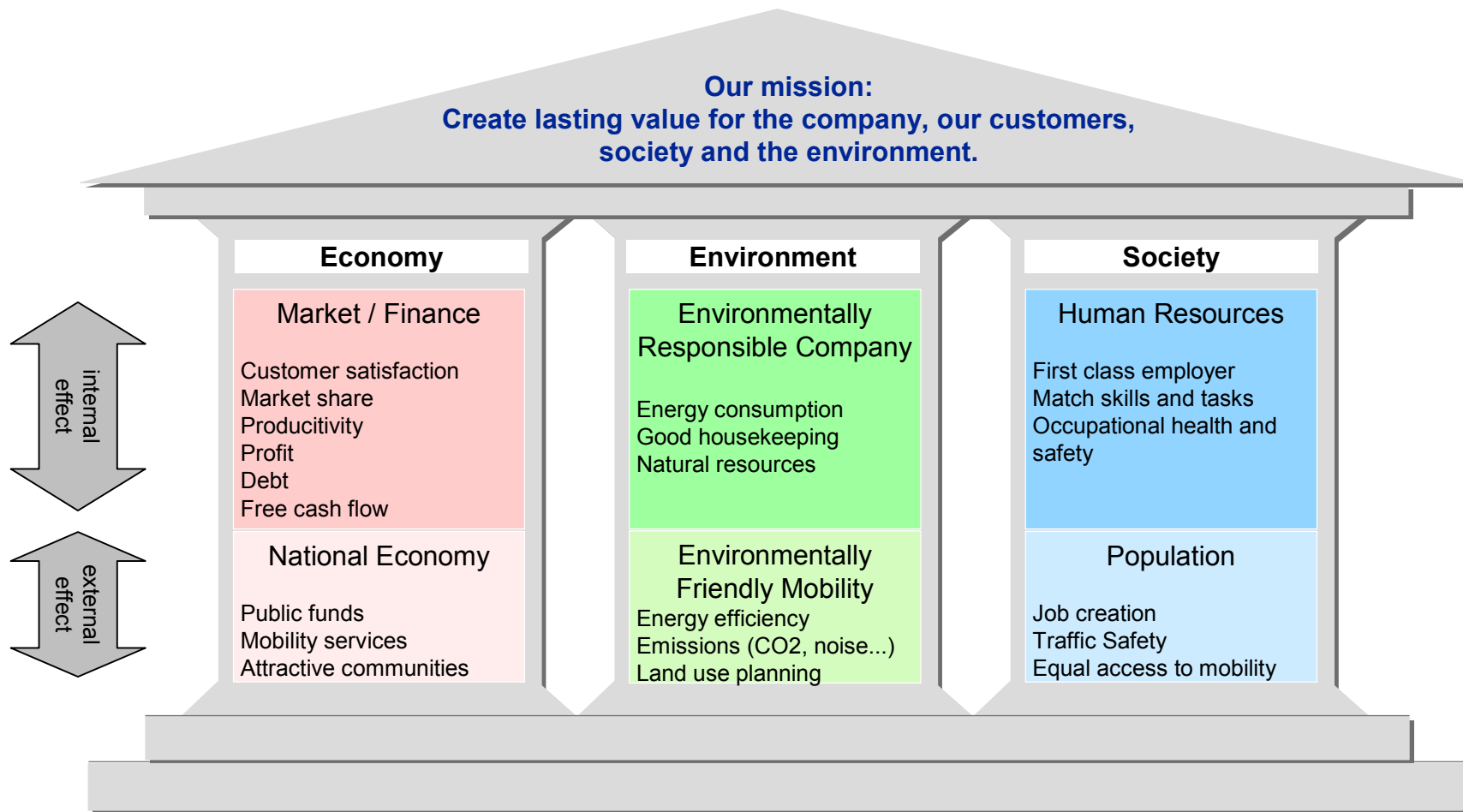


Contaminated sites: **5880 sites inventorized and examined** 
 16 sites cleaned up



Particle emissions: **58% of the diesel fleet with particle filters** 
 (corresponding to 73% of installed power)

Where do we want to go? Developing a common understanding of the term „sustainability“.

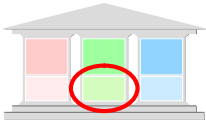
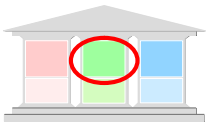
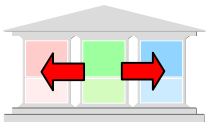
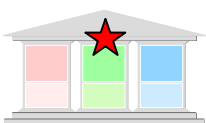


Nine company-wide objectives serve as SBB's sustainability cockpit.

		Company-wide Objectives	Economy	Environment	Society
Market	1	Market Share	●	●	
	2	Customer satisfaction	●		●
	3	Company image	●		●
Finance	4	EBITDA	●	●	●
	5	Free Cash Flow	●		
Performance	6	Punctuality	●		●
	7	Safety	●	●	●
	8	Ecological sustainability	●	●	
	9	Satisfaction of personnel	●	●	●

● = primary focus of the goal
 ● = indirect effect of the goal

The strategy for the pillar „Environment“ is condensed into one key target.

Objective	Key Performance Indicator	Effective 2009	Target 2015
1. Increase environmental performance 	CO ₂ -Emissions	137'000 t (0 EP)	123'000 t (30 EP)
2. Reduce costs and risks associated with environmental issues 	Energy savings	68 GWh (0 EP)	230 GWh (40 EP)
3. Use environmental advantage in communication and marketing 	Public image of SBB as environmentally friendly company	75.1 (0 EP)	76.7 (20 EP)
4. Develop towards a leader in sustainability 	Implementation of environmental management	20% (0 EP)	100% (10 EP)
	Index “ecological sustainability”	0 EP	100 EP

EP = Eco-Points

Sustainable mobility: the signals are on green!

